

Otter Pool Barn - Details of Accessibility Equipment

NAS standards:

Otter Pool Barn has been renovated using advice from the National Accessibility Scheme guidelines and their advisor. It was assessed in April 2017 and reached all NAS standards to the highest standard, H1, V1 and Access Exceptional grading.

[Document download](#)



Wheelchair lift:

The wheelchair lift is suitable for wheelchair and seated use. It operates quietly with motors situated outside the property to minimise disturbance for adjacent bedrooms. It is rated for 225Kg.

[Document download](#)



Ceiling Hoist:

An X-Y electric hoist is fitted in Bedroom 1 and has a fully integrated gate through into the en-suite bathroom. It is rated for 200Kg. Slings are not provided, so please bring any slings you need.

[Document download](#)



Mobile Hoist:

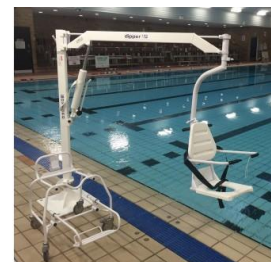
This manual hoist fits in the lift so can be used throughout the house. It is suitable for use for bath transfer. It is rated for 175 Kg. Slings are not provided, so please bring any slings you need. There are two mobile hoists in the property. One kept downstairs and one upstairs. Please leave plugged into the mains when not in use, so fully charged when they are needed.

[Document download](#)



Pool Hoist:

This manual hoist has a wheeled chair (allowing changing in the warm and dry), this then clips to the hoist for transfer into the pool. It can be located for transfer into the main section of the hydrotherapy pool or the hot tub section. The hoist will be left in position for the hot tub unless otherwise requested. (It can be moved on request). It is rated for 140 Kg.



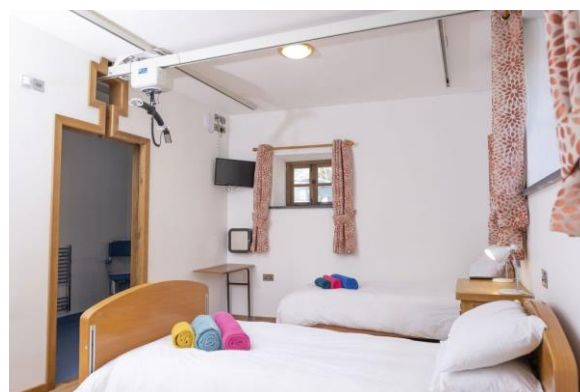
[Document download](#)

Profiling Beds (2) – Bedroom 1:

Two electric profiling beds of different styles.

Bed (1) Standard profiling bed, with height raise, rated for 180 Kg and fitted with side rails. Bumper cushions are available at the property to be fitted if required. Fitted with waterproof mattresses.

Bed (2) Height adjustable profiling bed. No side rails. It is rated for 180Kg. This bed has no foot board, so suitable for taller visitors. This bed has a standard pocket sprung mattress. A waterproof additional bed topper is available at the property.



Profiling Bed – Bedroom 3:

As bedroom 1, bed (1)

[Document download](#)



Profiling Bed – Bedroom 5:

As Bedroom 1, bed (1)

Ola Classic Air Pressure Relief Mattress:

This mattress is available at the property and can be substituted for one of the other mattresses if required. The controller model is the OLA-4



[Document download](#)

Shower Chairs/Stools:

Two shower stools (different designs/height adjustment) and one wheeled shower chair are available at the property. They can be moved around the bathrooms to suit need.

Commode/shower wheelchair

This wheeled shower chair has brakes and can be used as a commode and/or shower chair.

**Bathrooms:**

All three bathrooms have wet room showers with flat access. There is a turning circle of at least 1.2m in all bathrooms. Toilets and basins meet NAS specifications. Handles are fitted in all three wet rooms/bathrooms in accordance with NAS recommendations

**Taps:**

All taps are ¼ turn lever taps

Doorways:

Doorways to bedrooms and bathrooms are fitted with pocket sliders (door slides into wall cavity). The aperture for each doorway is approx. 900mm wide. All other doorways are wider than this. Wheelchair approved sills are fitted to external doors.



Seating:

There are a variety of comfortable lounge chairs and sofas in the house and plenty of space for wheelchair users to join them. Two of the chairs are electric rise/recline. Some dining chairs have arms.



Kitchen adaptations:

Units under the sink are removable allowing easy wheelchair access at the sink. Oven and fridge/freezer doors open wide, allowing easy access for those with less mobility. There is plenty of space for additional seats at the large dining table.

Electric Sockets:

The barn is equipped with many electrical sockets. These have been installed at dual heights and to allow easy access, no matter how furniture, such as beds, is configured.

Lighting:

All bedrooms and the snug lounge are fitted with multi source, dimmable lights. Additional lights are available throughout the house, enabling lighting to be suited to your needs.

Hearing Induction loops:

The snug lounge TV.



Assistance Call Systems:

All 6 bedrooms and 3 bathrooms are fitted with assistance call cords. Upstairs rooms have a visual/audible alert panel on the Minstrel's Gallery, visible from the Great Hall. Downstairs rooms are visible from the kitchen/diner.



[Document download](#)

Fire Alarm Systems:

The property is fitted throughout with fire and CO2 alarms. Activation sets off an audible and visual alert. A vibrating pad is available at the property for those that need an additional method to alert them to the alarm. This can be clipped into the alarm box in bedrooms as required.

Hydrotherapy/Spa Pool:

The pool is divided into a hot tub area and a larger area for swimming/exercise. There is a removable partition between the two, but it is recommended that this is only removed for those unable to exit and re-enter the water, as the heat of the hot tub water will be significantly reduced when it is removed. The hot tub will be pre-set at 37°C and the pool at 29°C. For those desiring to complete hydrotherapy in the pool, the temperature should be about 34°C. Temperatures can be adjusted while you are staying at the property, but the pool will take several hours to change temperature.

**[Document download](#)****Pool Cover:**

The pool cover is fully automated and can be operated easily. It can be locked to prevent access for safety reasons. Please don't open the pool in high wind conditions as the cover can catch the wind and be damaged.

[Document download](#)**Power Generator:**

An automatic-start generator is installed at the property to ensure that there is always a power supply, even when the mains power service is interrupted. This will allow all normal functions of the property to continue to run (e.g. heating, lighting, hot water, charging sockets.). The pool/spa will not heat during a power outage. Please try not to use the high power appliances as well. e.g. oven, grill, toaster and kettle.